



REGIONE CALABRIA



AZIENDA OSPEDALIERA BIANCHI
MELACRINO MORELLI

U.O.C. ATTIVITA' TECNICHE E PATRIMONIO
U.O.S. GESTIONE ATTIVITA' TECNICHE

RILIEVI PLANOALTIMETRICI DEL COMPLESSO OSPEDALIERO
"OSPEDALI RIUNITI DI REGGIO CALABRIA"

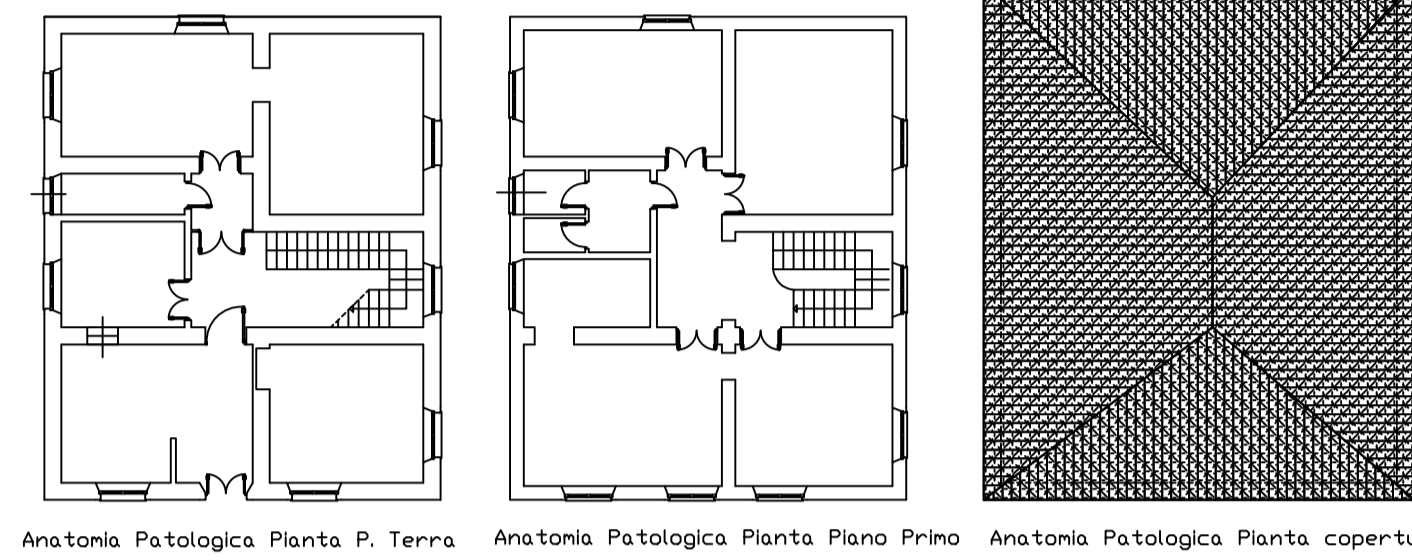
elaborato:
Anatomia Patologica - Ex Officina - Morgue - Sedi Sindacali
STATO DI FATTO

SV OORR

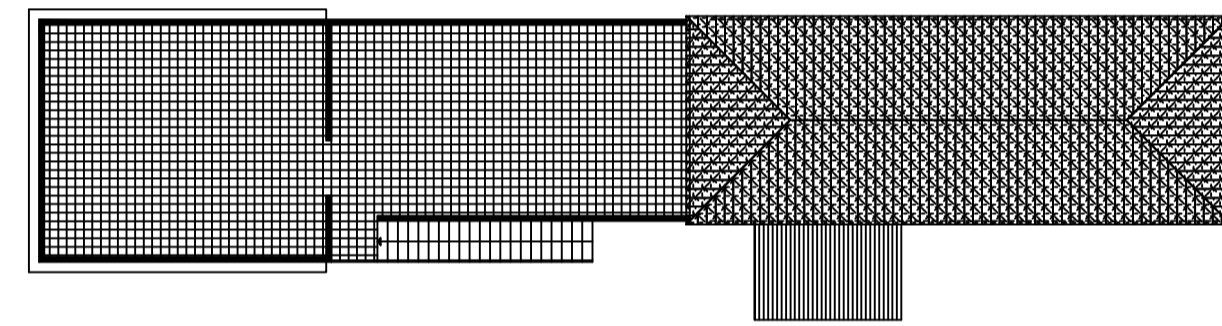
SCALA 1:200

DISEGNATO DA:
GIOVANNI TROLO

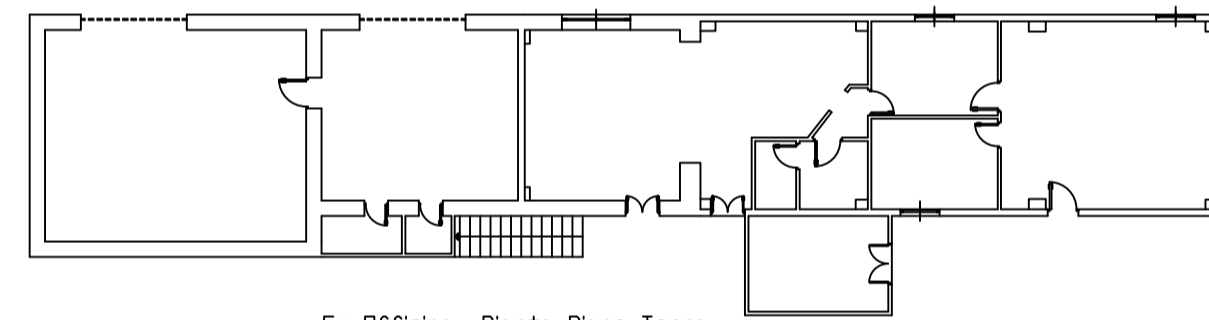
Rev. Dic. II



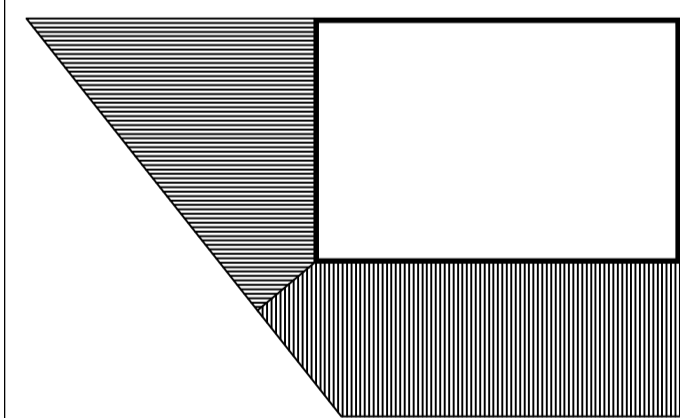
Anatomia Patologica Planta P. Terra Anatomia Patologica Planta Piano Primo Anatomia Patologica Planta copertura



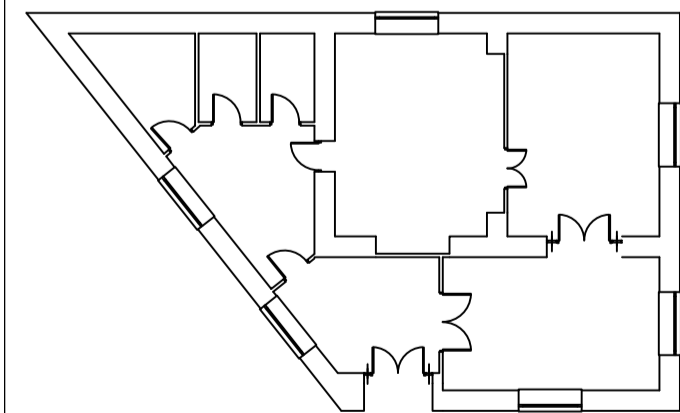
Ex Officina Planta copertura



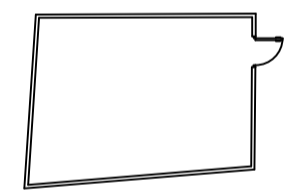
Ex Officina Planta Piano Terra



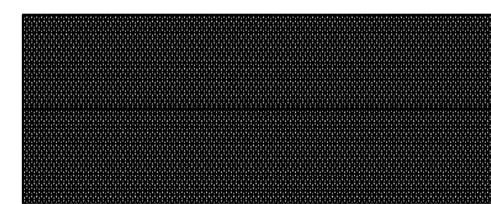
Morgue Planta copertura



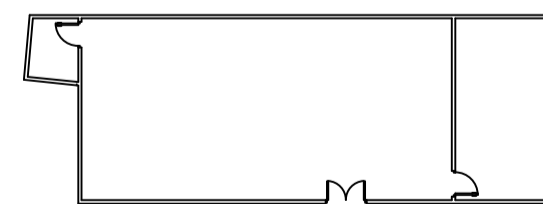
Morgue Planta Piano Terra



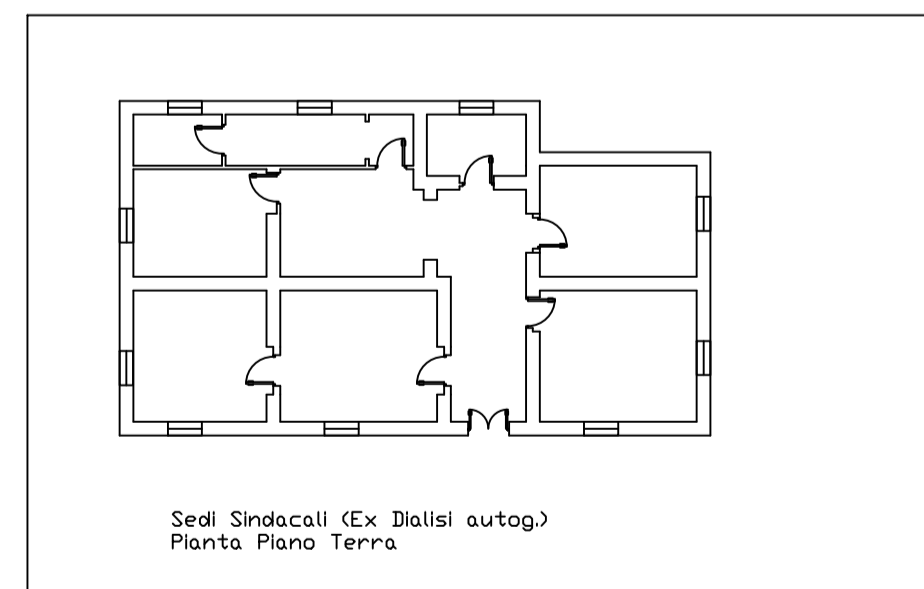
Deposito falegnameria



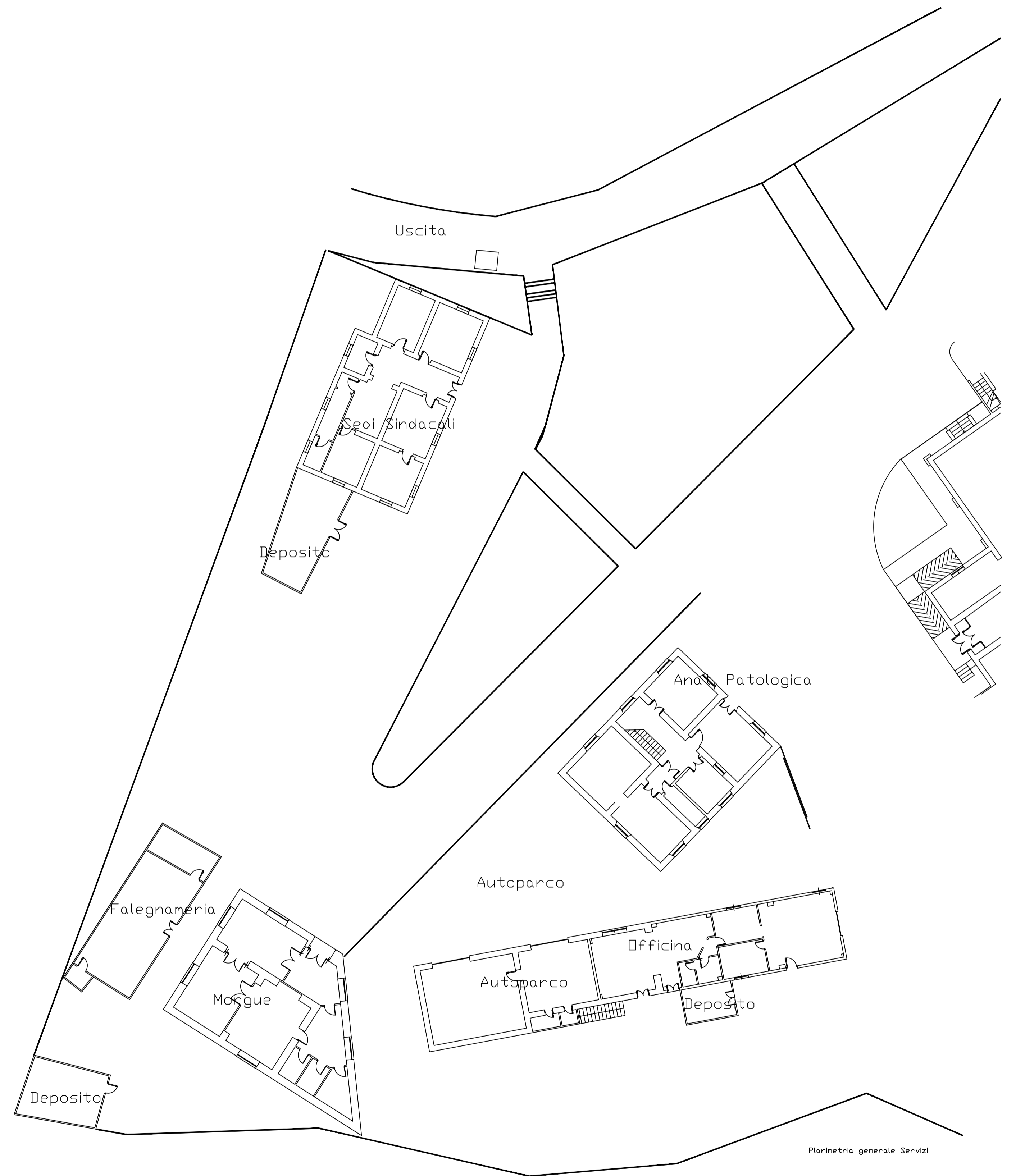
Falegnameria Planta copertura



Falegnameria Planta Terra



Sedi Sindacali (Ex Ditalisi autog.)
Planta Piano Terra



Planimetria generale Servizi